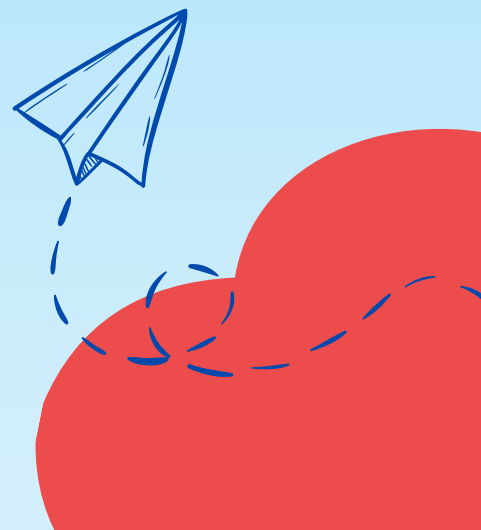




ASPIRE OSHC

VACATION CARE PROGRAM MERIMBULA

[BOOK NOW](#)



VACATION CARE PROGRAM

MERIMBULA

Service Manager: Chloe Fulton

Phone: 0427 022 415

Email: merimbula@aspire-oshc.com.au

MONDAY

14/04/25

Arts & Crafts for Easter! CENTRE DAY



Join us in Today's Arts & Crafts where we will be making our very own Easter Bunnies & Easter Baskets! With other Easter Activities displayed around the Room.

- Location: Merimbula Public School
- Vacancies: 42
- Morning tea: 9:30am
- Lunch: 12pm
- Afternoon tea: 3pm
- All day activity

\$85

TUESDAY

15/04/25

Movies Day EXCURSION



Today we will be walking to the Cinemas to catch a kid-friendly Movie with our peers. Children will be provided with a Small Popcorn & Water
Permission slips **MUST** be signed

- Location: Picture Showman Merimbula
- Vacancies: 41
- Transport: walking
- Morning tea: 9:30am
- Leave centre: 10:30am
- Arrive at Cinema: 11am
- Arrive at Centre: 1:30pm
- Lunch: 1:30pm
- Afternoon tea 3pm

\$95

WEDNESDAY

16/04/25

EASTER EGG HUNT CENTRE DAY



It's that time of the year! Join us in a Big Easter Egg Hunt and trade the Eggs found for something out of the Box! Lots of activities including guessing how many eggs are in a Jar!

- Location: Merimbula Public School
- Vacancies: 41
- Morning tea 9:30am
- Lunch: 12pm
- Afternoon tea 3pm

\$85

THURSDAY

17/04/25

Picnic at Spencer Park EXCURSION



Today we are off to Spencer Park for a Picnic Lunch & Play on the Playground. We will also be bringing sports equipment down for touch footy & other activities. Permission slips **MUST** be signed

- Location: Spencer Park Merimbula
- Vacancies: 42
- Transport: walk
- Morning tea: 9am
- Leave OSHC: 10:30am
- Arrive at park: 10:45am
- Picnic: 11:30am
- Arrive at centre: 1:30pm
- Afternoon Tea 3pm

\$95

FRIDAY

18/04/25

**PUBLIC HOLIDAY
CLOSED**

VACATION CARE PROGRAM

MERIMBULA

Service Manager: Chloe Fulton

Phone: 0427 022 415

Email: merimbula@aspire-oshc.com.au

MONDAY

21/04/25

PUBLIC HOLIDAY
CLOSED

TUESDAY

22/04/25

Dress Up & Disco Party Day
CENTRE DAY



Come along and bust a move!
Today we will be holding a dress up competition as well as a disco party! Join in the Fun & show us your best moves!

- Location: Merimbula Public School
- Vacancies: 41
- Morning tea: 9am
- Lunch: 12pm
- Afternoon tea: 3pm
- Child-led play

\$85

WEDNESDAY

23/04/25

Mini Golf at Top Fun
EXCURSION



Let's get our walking shoes on,
we are heading to Top Fun to
play Mini Golf!
Permission slips **MUST** be signed

- Location: Top Fun Merimbula
- Vacancies: 41
- Transport: walking
- Morning tea
- Leave centre: 10:30am
- Arrive at Top Fun: 11am
- Leave Top Fun: 1pm
- Arrive at Centre for Lunch: 1:30pm
- Afternoon tea 3pm

\$95

THURSDAY

24/04/25

Footy day
CENTRE DAY



Join the fun & dress up in your
Favourite Footy Team! We will be
playing fun games of Touch
Footy against the Teachers.
Prizes for Best Dressed!

- Location: Merimbula Public School
- Vacancies: 41
- Morning tea 9:30
- lunch 12:30
- Afternoon tea 3pm
- child-led play

\$85

FRIDAY

25/04/25

PUBLIC HOLIDAY
CLOSED

VACATION CARE PROGRAM

MERIMBULA

Service Manager: Chloe Fulton

Phone: 0427 022 415

Email: merimbula@aspire-oshc.com.au

MONDAY
28/04/25

Chef Day CENTRE DAY



Master Chef Day!

Today is all about being a Chef! Design your own Master Chef Hat & wear it while creating your own Yummy Pizza! Join us in a day of fun filled activities.

- Location: Merimbula Public School
- Vacancies: 41
- Morning tea 9:30
- lunch: 12:30
- Afternoon tea 3pm

\$85

TUESDAY
29/04/25

Movie & Pyjama Day CENTRE DAY



Join us for a fun relaxing day at the centre. Wear your favourite PJ's and relax by watching movies with popcorn and poppers!

- Location: Merimbula Public School
- Vacancies: 41
- Morning tea: 9:am
- lunch: 12:30pm
- Afternoon tea: 3pm
- Child-led play

\$85

WEDNESDAY
30/04/25

BACK TO SCHOOL



BSC & ASC

THURSDAY
01/05/25

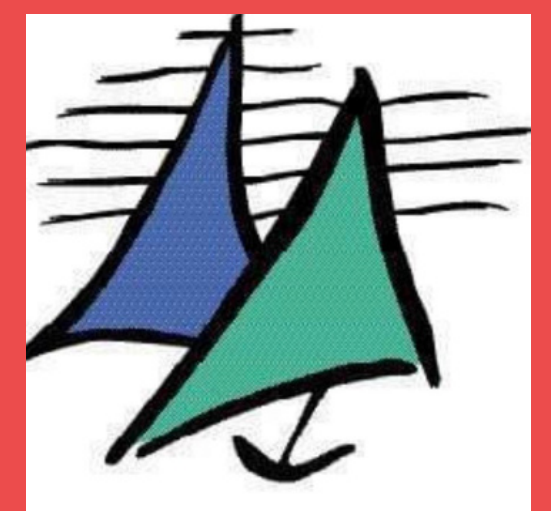
BACK TO SCHOOL



BSC & ASC

FRIDAY
02/05/25

BACK TO SCHOOL



BSC & ASC

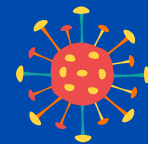
VACATION CARE IMPORTANT FAMILY INFORMATION

Join our fun filled **ASPIRE OSHC** Vacation Care program. To make a booking for Vacation Care please 'make a booking' through the [OWNA parent portal](#).



NOT HAT NO PLAY

As a sun safe measure ASPIRE OSHC requires all children and staff to wear a Cancer Council approved hat during high UV periods. In addition, and as required by the Cancer Council and WHS legislation we monitor the UV Index daily to ensure we take all reasonable precautions to protect children and staff from over exposure to the sun.



ALLERGY AWARENESS

On enrolment, you are required to advise staff if your child has an allergy and identify the allergy on the enrolment form. To ensure we are able to take best care of your child we ask that you also provide information as to the triggers and symptoms of your child's allergy. All efforts will be made by staff to avoid such triggers. All ASPIRE OSHC services are "Nut Free" environments. Children are not allowed to bring nuts of any type into our services. The sharing of food is also not allowed.



ARRIVALS AND DEPARTURES

You are required to sign your children in and out of the service each day recording arrival and departure time. For safety purposes, it is important that staff are informed of your child's arrival and departure daily.



APPROPRIATE CLOTHING

As a sun safe measure ASPIRE OSHC requires all children and staff to wear a Cancer Council approved hat during high UV periods. In addition, and as required by the Cancer Council and WHS legislation we monitor the UV Index daily to ensure we take all reasonable precautions to protect children and staff from over exposure to the sun.



ANAPHYLAXIS

If your child has a diagnosed allergy, before your child can attend the service you must provide a completed coloured allergy action plan including a coloured photo and labelled medication. All medication should be handed directly to staff on arrival. All medications must be on the premises at all times when your child is present. The action plans are to be updated as required (at least yearly) and staff notified of any changes to the action plan (refer to the anaphylaxis policy and procedure).



MEDICATION

Before we can administer a prescribed medication to your child, we require you to complete a medication authority form. All sections of the medication form need to be completed. Medication can only be administered if the medication is in its original packaging and labelled with the child's name, a current date and the name of the medication and dosage required. (refer to medication policy) Children returning from an illness will require a Doctor's clearance certificate stating they are no longer infectious and are fit to attend care.



SUNSCREEN

Sunscreen is available at the service, we ask that you apply the sunscreen to your child upon arrival. Staff will supervise re-application during the day. If your child is sensitive or has an allergy to the sunscreen we use, please supply an appropriate sunscreen for your child.



ASTHMA

If your child has been diagnosed with Asthma, you must provide a current Asthma action /management plan, which needs to have been completed by your treating GP. In addition we require a long term medication form (refer to the asthma policy and procedure).



PERSONAL BELONGINGS

We recognise that some children may like to bring cherished toys and equipment from home for use during the vacation care program. ASPIRE OSHC cannot take responsibility for lost or damaged items - this includes technology! Tech use can only take place in a designated space at a designated time. These rules will be explained to the children every day before the start of the daily program.